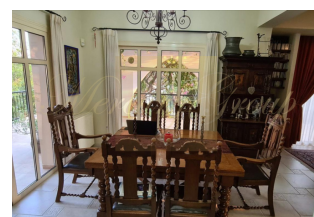


For sale 2-storey villa of 310 sq

Cyprus, Limassol

Price:	€ 650 000
Object type	House
Bedrooms	4
Number of rooms	5
Land area	820 m2
Area	310 m2
Category	For sale



For sale 2-storey villa of 310 sq.meters in Limassol. The ground floor consists of one bedroom, living room with kitchen, one kitchen, one bathroom, one WC. The first floor consists of 3 bedrooms, one bathroom, one shower WC. There are solar panels for water heating, a fireplace, air conditioning, heating and a barbecue area. The owners will be leaving the furniture with the sale. Extras included with the property: parking space, garden. A charming Mediterranean property built on two levels offering 220m² of covered internal area in excellent condition plus verandas measuring approx. 90 m². The ground level consists of a very spacious open plan living/sitting room with a fireplace, a separate kitchen and dining area leading out to a large patio, bbq area and mature gardens, a study/guest room with en suite bathroom, laundry room and guest WC. With its gallery style and open wooden stairwell leading to the upstairs, it is the perfect backdrop for details like the homeowners modern art collection and antique furniture. Playing up this dominant aesthetic and elegant architectural touches, it is the ideal layout for socializing and entertaining whilst maintaining a warm sense of cosiness when the homeowners just want to rest and relax. The first floor comprises 3 double bedrooms with fitted wardrobes and family bathroom, the master bedroom includes en-suite facilities. The property includes central heating, split level air conditioning units, solar water system, pressure pump, parquet floors in bedrooms, ceiling fans, solid oak kitchen cabinets with granite tops and features a Rosières Paul Bocuse Range Cooker, double glazing, top quality materials used throughout the house, security alarm system, sea view and a good size plot about 820 m².

Contacts:

Inna Kolupaeva

GSM: +37127788866

(Viber, WhatsApp)

E-mail: inna@mgroup.lv