



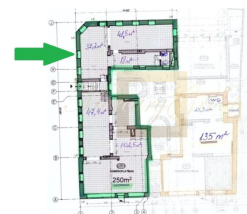
ID: LV-31842
WWW.MERCURYESTATE.COM
TEL./VIBER/WHATSAPP:
+ 37125420529



We offer for rent commercial premises on Elizabetes Street

Latvia, Riga

Price:	€ 4 714
Object type	Commerce property, Commerce
House type	Renovated house
Number of rooms	0
Area	261.90 m2
Category	For rent



We offer for rent commercial premises 261,9 sq.m. in the very heart of Riga, where is everything you need to enjoy a comfortable life. Opposite the building is located 5-star hotel Bergs, Vermana park, close are a lot of the shops, offices, banks, cafes, restaurants, etc. The location offers excellent public transport connection to all districts - tram, bus, train.

Commercial premises with panoramic windows on the 1st floor of the building. High ceilings - 6 meters.

In the building are 21 apartments with the living area from 65 to 145 square metres. Among them are three 2-level apartments. The premises on the ground floor are intended for commercial use.

The basement floor has storage units with an area of 3 to 9 square metres for each of the apartments in the building, as well as engineering and utility services rooms for management of the property. The building is equipped with a multi-level parking for 8 cars.

Contacts:

Bogdana Farafontova
GSM: + 37125420529
(Viber, WhatsApp)
E-mail: bogdana@mgroup.lv