



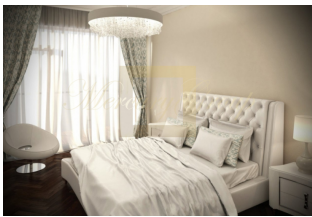
ID: LV-163525  
WWW.MERCURYESTATE.COM  
TEL./VIBER/WHATSAPP:  
+37129128323



### A cozy 2 bedroom apartment in new project CENTRUS...

Latvia, Riga

<b>Price:</b>	<b>€ 347 000</b>
<b>Object type</b>	Apartment
<b>House type</b>	New project
<b>Market</b>	New building
<b>Number of rooms</b>	3
<b>Area</b>	90.80 m2
<b>Category</b>	For sale



A spacious 2 bedroom apartment with overall area of 92.6 sq.m. is offered for sale. Apartment is conveniently located on the 3rd floor of the 7-story building. The apartment consists of 2 bedrooms, a living room with open plan kitchen and dining area, 2 bathrooms/WC, 2 wardrobes and a hallway. Apartment is offered for sale with full finish (oak parquet flooring, tiles).

Centrus residential buildings offer a choice of the three most appealing residential interior design trends - classic, cosy and modern.

Parking spots and storage rooms on the underground floor will be available for rent.

We can offer all flats available for sale in this project. Please do not hesitate to contact us to receive information about new offers in the project. [Click here](#) to get more information about the CENTRUS residential apartment complex.

Riga is known as the Pearl of Northern Europe on the shore of the Baltic Sea. The modern and dynamic city surprises, impresses and inspires people because of its well-preserved cultural heritage, special charm, rich cultural and artistic life, and many parks and squares. Centrus is located in a part of Riga once famed for the city and known as Little Paris. The newly developed project Centrus is located in the active part of the city centre - in the quarter surrounded by Tērbatas, Dzirnava, Blaumaņa and Barona streets, and encircled by historical Art Nouveau buildings. This is a safe haven established in a completely safe and high-quality environment, with the always changing and dynamic daily rhythm of the city awaiting you just outside Centrus. The neighbourhood of Centrus is surrounded by the most remarkable historic and modern sites and buildings in the city. Just a few minutes' walk to the green Vērmanes garden, with many fountains and monuments, the



ID: LV-163525  
WWW.MERCURYESTATE.COM  
TEL./VIBER/WHATSAPP:  
+37129128323

Latvian National Opera, Esplanade, Freedom Monument, and to the Old Town – a unique part of Riga on the UNESCO World Heritage list. The “calm centre” of Riga, located near Centrus stands out proudly with its Art Nouveau architecture. Convenient public transportation, taxis, cycle paths, and nearby main streets give easy access to Riga International Airport, the central railway station, Riga bus terminal, passenger port and marinas. The sea resort town of Jurmala and the Gulf of Riga is located only a half hour’s drive from the city, with excellent relaxation, spa complexes, and summer concerts and entertainment. Numerous shopping centres, banks, government and local authorities will ease the needs of a comfortable daily life.

Centrus is a city inside the city, providing a comfortable living space, high-quality business location and a special place to relax. There are two seven-storey residential houses – with 84 flats – under development in Centrus quarter. The first floors of the buildings will house shops and cafés. In buying a flat here, new owners will get a comfortable and high quality flat in the city centre, while maintaining the privacy and convenience of everyday life. Modern and carefully selected top quality materials and the latest technologies are being used for the structure of the buildings and furnishings. The rational and convenient planning of the residential buildings will make life comfortable and cosy in the centre of Riga.

A wide two-level underground car park will meet the needs of residents. Modern elevators will link the car park to flat entrances. For the comfort of residents, the outdoor space is private, closed and intended only for their use. A green courtyard with various lighting, with two-tone granite cobblestone, elements of environment and small architectural forms further emphasize the attractive and dynamic environment, with multifarious moods. Parents can rest at ease while their children enjoy the playground. Alongside the closed residential environment will be a landscaped public zone in the Centrus quarter. A pedestrian promenade will connect Dzirnava and Blaumaņa streets; with cafés and recreational areas, and shops on both sides of the promenade.

**Contacts:**

**Julia Barsukova**

**GSM:** +37129128323

(Viber, WhatsApp)

**E-mail:** julia@mgroup.lv