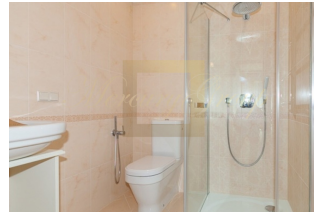




**A wonderful two bedroom apartment
 in a new residential building CLUB 10
 in Jurmala...**

Latvia, Jurmala and region

Price:	€ 400 000
Object type	Apartment
House type	New project
Market	New building
Number of rooms	3
Area	82.10 m ²
Category	For sale



A wonderful two bedroom apartment (Nr. 5) with living area of 82.1 sq.m. (+ terrace 10.2 sq.m.) is offered for sale. Apartment is conveniently located on the 2nd floor of the 3-story building. The apartment consists of two bedrooms, a living room with open plan kitchen and dining area, a bathroom, WC.

We can offer all flats available for sale in this project. Please do not hesitate to contact us to receive information about new offers in the project. [Click here](#) to get more information about the CLUB 10 residential apartment complex.

Jurmala is a unique town - a resort in Latvia on the shores of the Baltic Sea. Everyone who has been to this beautiful place once, felt its special aura, created by unique old buildings, the pinewood, the dunes, the sea, the lakes and pure air. The Baltic resort Jurmala is located 25 km far from Riga, the capital. Due to the beneficial geographic location the town is very easy for access from any country of the world. The international airport "Riga" is only 15 km far from the centre of the city. It takes only 30 minutes to get from the centre of Riga to Jurmala by a commuter train or by a route minibus. The resort has a little over 60 thousand permanent residents. But in summer time this number of people doubles.

The new residential project "Club 10" is located near the sea, on the territory of Jūrmala, Bulduri surrounded by summer villas and well-developed infrastructure on Meza prospect, in 18 km from Riga City center. The area of villas, pine forests, resort hotels and all relevant infrastructures as sport and leisure complexes, aqua park and supermarkets. The property is situated in a quiet, picturesque area in 500 m distance from Riga's Bay seaside, and just 12 km from Riga international airport, with good access roads.

The residential complex is a 3-storey building with 10 apartments and underground parking. In addition to the parking lot for 12 cars, 4 ground floor apartments have access to the terrace adjacent to the south-east and north-west sides. Entrance to the grounds is through the gate with a remote control. Near the entrance to the area provides space for dumpsters. The resort also has a small playground and landscaped green area to area residents. The first two floors are located at 4 and two-bedroom apartments with balconies, and on the third floor - 2 spacious three-bedroom apartments with terraces. Almost all the apartments in the building are focused on several sides of the world, have a corner location in a general way home. In the basement there is a



ID: LV-155211
WWW.MERCURYESTATE.COM
TEL./VIBER/WHATSAPP:
+37129128323

storage room on the number of apartments, where you can keep bicycles, skis, etc. In the morning to open the window - you'll breathe fresh air and enjoy the beautiful view and the silence. You will certainly be able to appreciate the high quality of housing - building condition, facilities and convenience. You have a great opportunity to own beautiful apartments near a forest close to the sea shore. Groomed and fenced area around the house with a playground and green spaces, benches, lawns, paved walkways and ground parking. Parking space - 20 000 EUR/p.p.

Contacts:

Julia Barsukova

GSM: +37129128323

(Viber, WhatsApp)

E-mail: julia@mgroup.lv