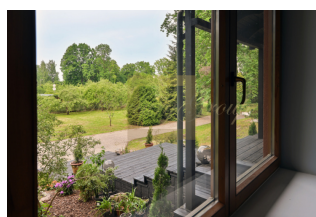
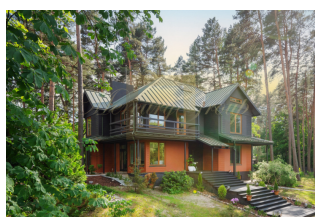




## Eco-friendly house for a large family by the sea in Vaivari

*Latvia, Jurmala and region*

<b>Price:</b>	<b>€ 890 000</b>
<b>Object type</b>	House
<b>House type</b>	Detached house
<b>Number of rooms</b>	9
<b>Land area</b>	2400 m2
<b>Area</b>	600 m2
<b>Category</b>	For sale



### Eco-friendly house for a large family by the sea in Vaivari

#### Exceptional project:

- Natural materials. Entirely built from slow-growing northern pine, which ensures durability and eco-friendliness.
- Spacious layout. Each room is designed to be bright and airy, with large windows offering stunning views of the surrounding pine trees.
- The house was commissioned in 2015 and completely renovated in 2024.

#### Spacious rooms and layout:

- Total area of the villa: 600 m<sup>2</sup> (402 m<sup>2</sup> internal heated areas and 198 m<sup>2</sup> external area of awnings and garage).
- Plot area: 2400 m<sup>2</sup> with the possibility of expanding to 4880 m<sup>2</sup>.
- The main space of the house is located on two floors. There is an attic floor. In the basement there is a SPA with a relaxation area.

#### Comfortable living spaces:

- Six bedrooms, including two master bedrooms, one on each floor.
- Six bathrooms. One on each floor, plus a beautiful white freestanding bath in front of the window overlooking the pine trees.
- A spacious living room with a second light and a ceiling height of 5.9 meters, a cozy fireplace and direct access to the terrace.
- A separate dining room and a separate kitchen. Ideal for family dinners and entertaining.



ID: LV-153017  
WWW.MERCURYESTATE.COM  
TEL./VIBER/WHATSAPP:  
+371 28007718

- The house has a ventilation system and a built-in vacuum cleaner.

For entertainment and convenience:

- The SPA area includes a large wood-fired sauna, a small pool, a relaxation room and a large room with a billiard table. There is space for a separate bar and gym.

- Outdoor terraces allow you to enjoy the silence of the pine park right from your home.

- A separate cozy garden grill area for outdoor parties.

Advantages of the location:

- The beach is only 10 minutes away. There are cafes, grocery stores within walking distance and a medical center nearby. Lidl, Rimi, Maxima are 8 minutes away by car.

- Proximity to transport. Vaivari railway station is 2 minutes away, providing easy access to the center of Riga. Very convenient for children to get to schools in Jurmala or Riga.

#### **Contacts:**

**Paulina Oleinikova**

**GSM:** +371 28007718

(Viber, WhatsApp)

**E-mail:** paulina@mgroup.lv