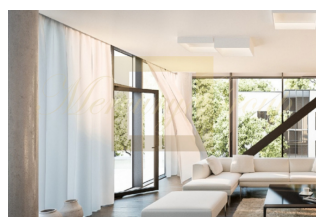
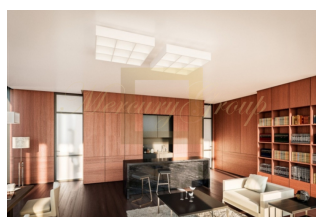




**Apartment for sale in the new project Renaissance**

*Latvia, Riga*

<b>Price:</b>	<b>€ 615 000</b>
<b>Object type</b>	Apartment
<b>House type</b>	New project
<b>Market</b>	New building
<b>Number of rooms</b>	4
<b>Area</b>	184.70 m2
<b>Category</b>	For sale



The Renaissance is located in a prestigious location to allow lovers of contemporary art and culture to be encapsulated at the core of the most influential events in the creative industry. Renaissance is located at the epicentre of Riga's contemporary art scene. Main events and exhibitions in the creative industry will always be within arm's reach from your home. Vesetas Street 6 is a quality living space in the modern centre of Riga, where a fresh high-quality building zone is being developed nearby Riga's historical and quiet centre.

This is an attractive environment to live in for a modern city dweller. Riga's modern center is on the Daugava's right bank and it's a part of Riga's compact center. In the vicinity, the central traffic street is Skanstes iela, but the borders of the neighborhood are marked by Pulkveža Brieža, Hanzas, Vesetas and Dunties iela, as well as Ganību dambis and the railway.

RENAISSANCE project solution is based on:

- street landscape and quarter space of high quality in an open perimetral building situation;
- creation of a living space of high quality inside the complex;
- visual and spatial merging of residential and quarter/street space within the borders of the building complex.

By combining these guidelines, the mission of the project is to create an object with its visual image and its exposed function open to the street landscape, actively participating in creation of it with its naturally changing processes inside the complex, while providing the building's occupants with a quality living space and unrestricted visual and outdoor connection with the urban space.

Each apartment is provided with an outdoor space separated, enclosed and covered from the rest of the building, giving a sense of privacy. The colonnade at the height of several floors, mentally detaching the outdoor space, serves as a reference to the classical architecture principles, creating impression of the building's monumental character inside and outside.

Apartments are offered in "white" finishing ready for creating your own design.



ID: LV-135656  
WWW.MERCURYESTATE.COM  
TEL./VIBER/WHATSAPP:  
+ 371 26595522

Parking spaces are available for additional price.

**Contacts:**

**Darja Kovalenok**

**GSM:** + 371 26595522

(Viber, WhatsApp)

**E-mail:** [daria@mgroup.lv](mailto:daria@mgroup.lv)