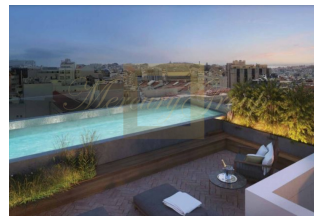
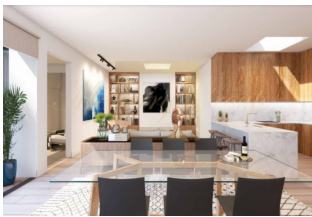




Picoas Belair

Portugal, Lisbon Metropolitan Area

Price:	€ 680 000
Object type	Apartment
Market	Resale
Bedrooms	2
Number of rooms	3
Area	85 m2
Category	For sale



The building is located in the most prime area of Avenidas Novas, at Rua Sousa Martins, 21, parallel to Av Fontes Pereira de Melo and very close to the Sottomayor palace and Picoas. With 28 apartments and a shop, it integrates several typologies between T1, T1+1, T2 and T3, with communal and private pools, as well as terraces and large outdoor spaces, linking the interior communication with the outside, benefiting from the unique light of Lisbon. All apartments will have one or more garage spaces. The building is located in the center of Lisbon, allowing you to live close to everything, with all kinds of public transport, local commerce, restaurants, shops, green spaces, schools and various services. The project is authored by the architecture office Fragmentos, and combines the preservation of facades with a modernity created for a city experience surrounded by large green spaces and swimming pools, some private, and with stunning views of the city on the higher floors.!

Contacts:

Olga Zagainova
GSM: + 37126677924
 (Viber, WhatsApp)
E-mail: olga@mgroup.lv