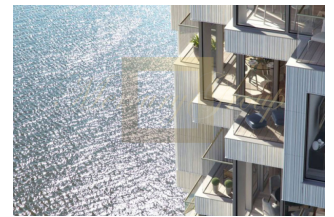
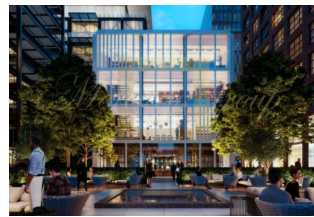
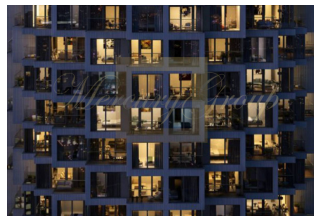
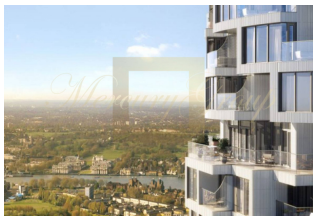




**1 bedroom apartment in London**

*Great Britain, England*

<b>Price:</b>	<b>€ 1 021 000</b>
<b>Object type</b>	Apartment
<b>House type</b>	New project
<b>Market</b>	New building
<b>Bedrooms</b>	1
<b>Number of rooms</b>	1
<b>Area</b>	63.40 m2
<b>Category</b>	For sale



**-Loft Apartments**

The Loft apartments are located on floors two to nine and feature interiors by Bowler James Brindley. The Lofts are designed to make the most of the connection to the surrounding green spaces and waterfront, with generous wraparound terraces framed by fluted terracotta panels. These apartments also feature contemporary, free-flowing spaces, complete with sliding walls, cool resin floors and unique mother of pearl clad bathrooms.

**-Cluster Apartments**

Cluster apartments form the heart of the building, located on floors nine to 32. With striking interiors by Goddard Littlefair, the Cluster typology contains the greatest variety, with the lower levels connected to the parks and water; the higher floors with the sky. The top floors (33 - 57) are home to the Bay apartments, which all boast double-height terraces set back into the building. These properties also feature interiors by Goddard Littlefair, with elegant palettes and cool textures, including concrete walls, timber panelling, pivot doors and natural stone, all of which maximise light.

**Contacts:**

**Tatyana Artamonova**

**GSM:** +37128487878

(Viber, WhatsApp)

**E-mail:** luxury@mercuryestate.com